



# Installing PIMSY

PIMSY is a Microsoft Windows application, which means it runs on a Windows PC or on an instance of Windows on a Mac computer. The installation process is very simple and should only take a few minutes.

Before you install PIMSY, it is a good idea to [CHECK THE COMPUTER/LAPTOP/TABLET REQUIREMENTS](#) for running the application.

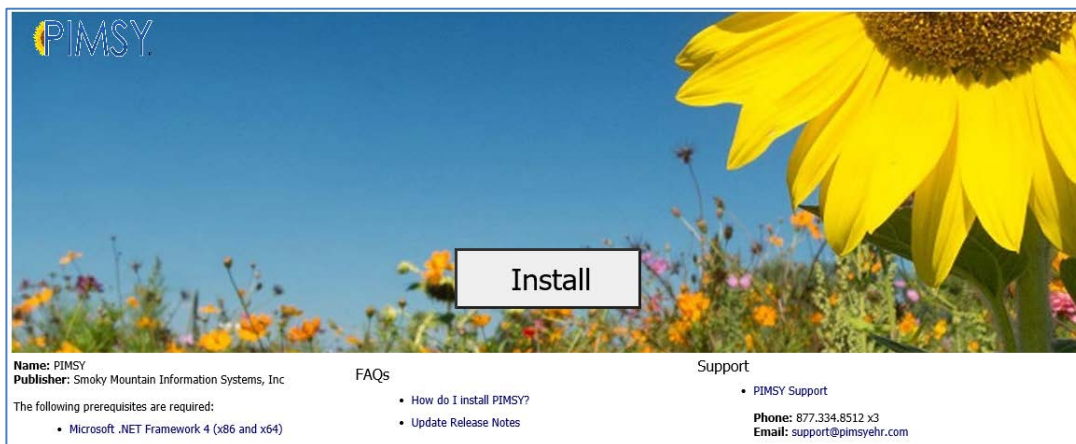
There is an element of Windows that PIMSY requires on your computer which is “.net 4.0 framework.” The framework is native to Windows and is installed in all recent versions. *Most likely, you will not need to download and install the framework.*

However, if you are not sure if you have .net 4.0 or think you may have an incorrect version (older computers), simply use the link on the Install web page: “*The following prerequisites are required: Microsoft .NET Framework 4 (x86 and x64).*” See below for accessing your company’s **Install web page**.

Alternatively, go to the **PIMSY Help Desk** ([pimsyemr.zendesk.com](http://pimsyemr.zendesk.com)) to download and install .net before you install PIMSY. To find the download, go to the **Getting Started** section in the PIMSY Zendesk Training area. You can download and install the required version of .net 4 framework. (*link to file: <https://pimsyemr.zendesk.com/hc/en-us/articles/204566205--net-Download-link->*)

Once you are sure you have the correct version of .net, you can proceed to install PIMSY. The application will NOT run without the current version of the .net 4.0 framework.

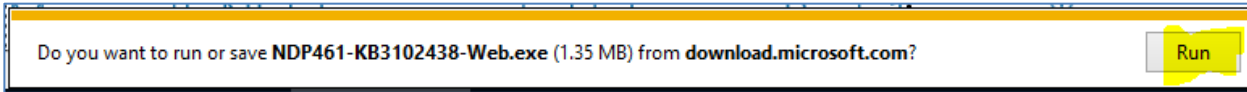
In your browser, navigate to the website provided by your system administrator. This link should end with *update.htm*. (ex: <https://www.smispimsy.com/PIMSY/Clients/ABCD/update.htm>)



Notice there are several links on this page:

1. **Download the .NET Framework 4** (x86 and x64)

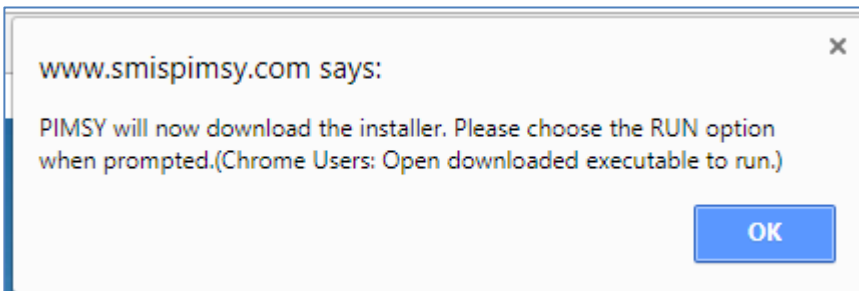
This link goes to a Microsoft download/install page for .NET. Click on **Download**.



Click on **Run** in the Internet Explorer browser or download the .exe file in another browser (click the file to start the installation process) and follow any subsequent directions. The system will let you know if you already have the correct version of .NET on your computer.

- 2. **FAQs** – an article on installing PIMSY, Update Release Notes and PIMSY Requirements
- 3. **Support** – contact the PIMSY Support team

On the install web page, click on the **Install** button. The following window will appear:

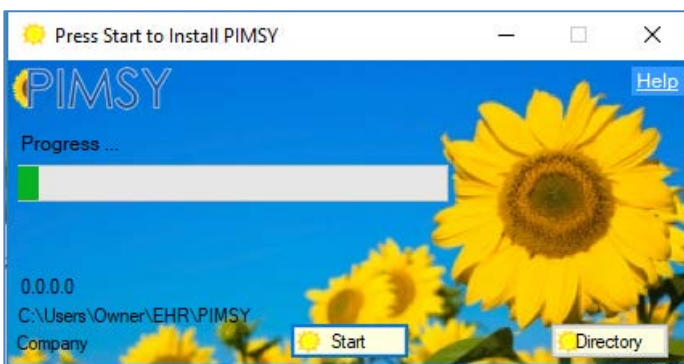


Click **OK**. In the next window, if you are using the Microsoft Internet Explorer browser, at the bottom of the browser window, click **RUN**.

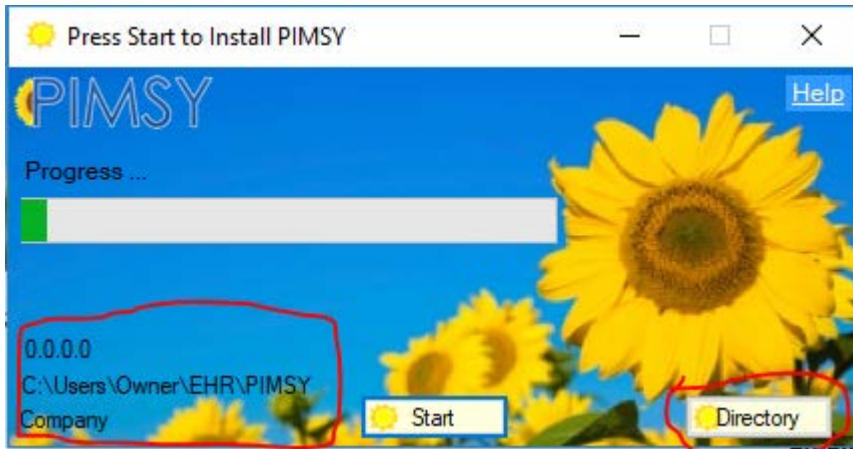


*If you are using another browser, such as Chrome or Firefox, download the .exe file and click on the file once it is in your Downloads folder.*

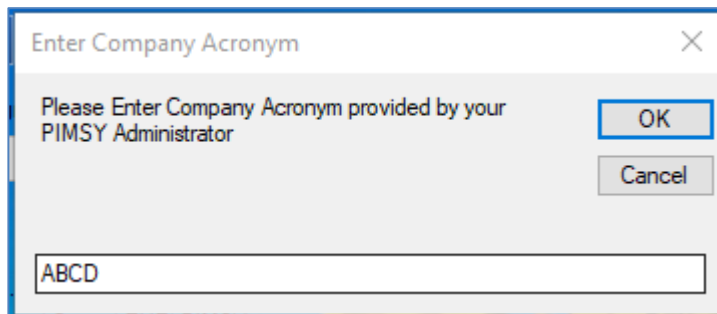
The next window is the installation progress bar. Press **Start** to initiate the install.



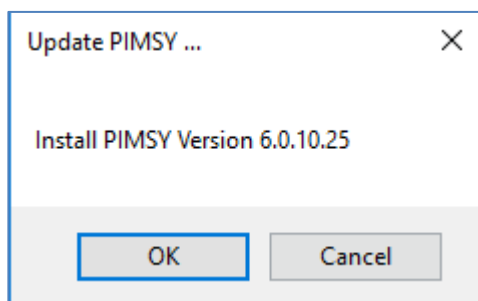
We do **NOT** recommend that our clients use the **Directory** button This feature is available for IT system administrators if needed.



To continue with the install, click **Start**. The installer will ask for your company acronym, then click **OK**.



Click **Start** again. Click **OK**.

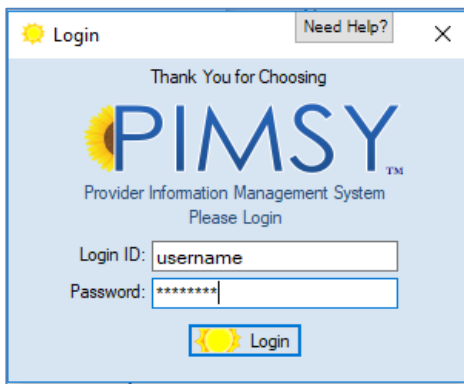


PIMSY will then proceed to install the application on your workstation. *Remember, no PHI is stored locally when you install PIMSY.*

**If PIMSY has never been installed before**, you will be prompted to enter the **Key** that has been assigned to your agency. This will be provided to you by your company administrator.



Once installed and the **Key** is in place, you will be prompted to log into PIMSY.



Enter your **Login ID** and **Password**. Click **Login**. PIMSY will then take you to the home page where you can navigate the rest of the system.

If you have problems or questions, contact Support ([support@pimsyehr.com](mailto:support@pimsyehr.com)) or call 877.334.8512 ext. 3